



# KALEIDOSCOPE

## THE LADIES OF NOTRE DAME AND SAINT MARY'S COLLEGE

VOLUME 50

NUMBER 1

SEPTEMBER 2015

From the PRESIDENT . . .

It's a hot summer day, another moving truck, movers, boxes, some chaos - another start and an ending. Our son is moving to North Carolina to start a new chapter of his life. He paved the way for our move to Notre Dame when he decided to attend college here, some ten years ago. We had not visited Notre Dame at that point, and our first visit was on a cold snowy day in February reserved for early admits. Having lived in Tempe, Arizona, the decision to come to South Bend was not easy. Our son is now a proud double domer (EE '09 and JD '15), and he also found the love of his life, yet another double domer, and got married in August 2015.

This move brings back memories of my moving from Sri Lanka as a new bride thirty years ago. Since then we have been blessed with three wonderful sons and a daughter, and another daughter through marriage. Arizona was my home for 25 years. I had no idea how I would find friends or settle in at Notre Dame. It was a difficult decision; one that required a lot of reflection and prayers. That year, when I attended the opening reception at Julie Silliman's request, I realized that The Ladies of Notre Dame & Saint Mary's College could be my connection to the larger South Bend community. The group of ladies warmly welcomed me to the Notre Dame Family, and ever since I have met many wonderful and talented women from all walks of life through the organization. I have experienced warm mid-western friendships.

Over the years, I enjoyed working with many ladies; namely, Pam Chipman and Julie Silliman on membership issues, and Denise Brenner, Dianne Entriakin, Elfa Johnsdottir, Elaine Nicgorski, Deb Bernhardt, Rose Lyphout and Gloria Kim on *The Spring Tea*. *The Christmas Tea* was another wonderful opportunity to meet and serve the university/college community. Nancy McAdams and Val

Bartels were wonderful partners to work for this event. I hope I can be of assistance to all incoming members of Notre Dame/Saint Mary's Family.

*The Ladies'* Opening Reception on September 14, 2015, at Club Naimoli is a great opportunity to meet and greet newcomers and those who have been a part of The Ladies, especially Winifred Caponigri-Farquhar, one of our members for many years whom we will honor. The speakers for this event will be Rev. Bill Lies, CSC, (N.D. Vice-President of Mission Engagement and Church Affairs), and President Carol Mooney, President of Saint Mary's College.

The Ladies host many interest groups. (See p.6-8 ) You can find more information and signup sheets for these interest groups at the Opening Reception. Val Bartels and Jackie Welsh, Program Co-chairs, have planned a variety of excursions

and activities for the year. (See p. 4) They will be present to answer questions and listen to your ideas. Newcomer Co-Chairs, Mary Fran Kitz and Kim Reynolds, welcome and assist newcomers to the University and College. (See p. 4) One of the components of *The Ladies* is service to the academic and local communities. Since the

1970's The Ladies has been given scholarship assistance both at UND and SMC to Local Women. There will be many opportunities to volunteer and be of service to the South Bend community. (See p. 4)

Finally, a warm welcome to all the new members of the Notre Dame & Saint Mary's family. We hope you will join us and enjoy the company of some wonderful women. A heartfelt welcome back to all our returning members. We hope you will renew your membership and discover new friends and strengthen old friendships. I wish you and your family good health, happiness and success in the new academic year. *Ravini Fernando*

*President*

THE LADIES OF NOTRE DAME & SAINT MARY'S COLLEGE  
2015-2016 PROGRAM

September 14, 2015 Monday 7:00 PM	Opening Reception for LND / SMC for Life, New & Returning members Club Naimoli in Purcell Pavillion See p. 3. Chair: Nancy McAdams, 273-2555 <nocmc@comcast.net>
September 22, 2015 Tuesday 9:30 AM	Outdoors Adventures to Potato Creek State Park for a hike in the woods. See p. 6 for more information. RSVP requested by September 20, 2015. Chair: Nancy McAdams 574-273-2555 or <nocmc@comcast.net>
September 30, 2015 Wednesday 9:30-11:30 AM	Morning Coffee for Newcomers at the home of Kim Reynolds Newcomers contact chairs for directions. See p. 4 Co-Chairs: Mary Fran Kitz 630-750-8849 or Kim Reynolds, 383-5730
October 2, 2015 Friday 9:40 AM/9:55 AM	"Off the Beaten Path" Edward Lowe Foundation in Cassopolis, MI. Car pooling / Foundation visit / lunch reservation RSVP to chair by Sept. 25, 2015. See p. 5. Chair: Val Bartels, 271-3637, <valreads@comcast.net>
October 27, 2015 Tuesday 7-9:00 PM	Evening Wine & Dessert for Newcomers at home of Denise Brenner Check with co-chairs for directions See p. 4. Co-Chairs: Mary Fran Kitz 630-750-8849 or Kim Reynolds, 383-5730
November 3, 2015 Tuesday noon	Newcomers & Visitors Lunch at <i>Mandarin House</i> on Edison Road. Contact chairs for directions and details. See p. 4. Co-Chairs: Mary Fran Kitz 630-750-8849 or Kim Reynolds, 383-5730
November 4, 2015 Wednesday 11:00 AM	<i>Dia De Los Muertos</i> at the Notre Dame Center for Arts & Culture Lunch follows at <i>Taquerio Chicago</i> , 2920 Western Ave., SB. RSVP by 11 / 1 See p. 5. Chair: Jackie Welsh, 277-1968, <jackie.welsh.14@gmail.com>
November, 11, 2015 Wednesday 7:45 AM	Day Trip to Kokomo, IN to visit <i>Kokomo Opalescent Glass Factory</i> and lunch See p. 15 and November newsletter for further details. Chair: Mary Lou Derwent, 277-1996, <mllderwent@alumni.nd.edu>
December 2, 2015 Thursday 10:00 AM	"Off the Beaten Path" Trip to New Carlisle for Christmas "shopping." See November newsletter for details. Co-Chairs: Maria Guarraci <mariaguarraci@yahoo.com> & Mary Montenaro
December 7, 2015 Sunday 2:00 PM	"Holiday Tea" and Recognition of Life Members Place: TBD See November newsletter Co-Chair: Heidi Lamm, Julie Nelson & Diane Nichols
February 2015 TBD noon	Scholarship Luncheon & Welcome of Second Semester Newcomers See January Newsletter Co-Chair: Bobbie Corke, Mary Lou Derwent & Elaine Nicgorski
May 5, 2015 Thursday 5:00 PM	Memorial Mass at Regina Hall, Saint Mary's College Celebrant: Fr. Thomas Blantz, csc, Chaplain Co-Chairs: Marge Marley, Abbie Cashore

### *From the MEMBERSHIP CO-CHAIRS . . .*

May we extend a very warm welcome to all newcomers and visitors to the University of Notre Dame and Saint Mary's College. We hope joining The Ladies will help you to build a sense of community and serve as a source of support. Please join and then

- participate in any of our interest groups,
  - join an "Off the Beaten Path" adventure,
  - show up for a *Let's Eat Out!*
- go with some members to "Dinner & a Movie,"
  - have fun at the Children's Playgroup or
    - generate a new group outing or fund raising idea of your own.

For those of us who have been members of LND/SMC, or wish to "re-join," it is the season to renew your membership. The membership form for 2015-16 as well as an envelope addressed to Membership Co-Chair Pam Chipman is enclosed. Please fill out the membership form in its entirety (See p. 13) so we can update all your information for this year's directory. The annual fees are \$25. These monies go to support our programs and fund raising efforts.

If you are making a donation to the LND/SMC scholarship funds in addition to your dues, please write separate checks. The membership

forms, dues check and donation check(s) should be mailed to Pam Chipman at 1208 Leeper Ave., South Bend, IN, 46617, by Saturday, October 10, 2015. It is important that the membership forms are received by the **Saturday, October 10, 2015, deadline** as it is the cut-off date for being included in this year's membership book.

You may also pay your dues and/or offer donations at the membership table at the Opening Reception on Monday, September 14, 2015. Please remind your friends to renew their memberships. It is never too late to join or "re-join" the LND/SMC.

Life Members, this is a reminder that you have the opportunity to make a donation to LND/SMC to help defray the cost of newsletter mailings and membership yearbooks. Any donations are greatly appreciated.

Finally, please join us at the Opening Reception on Monday, September 14, 2015, at 7:00 PM at Club Naimoli, Purcell Pavilion. Use the south entrance of the Purcell Pavilion. Someone will direct you to Club Naimoli. It is always so exciting to see friends and welcome new members to our community. We look forward to meeting you.

*Pam Chipman 288-0995 & Kate Murphy 272-8905*

*Membership Co-chairs*

### *From the OPENING RECEPTION CHAIR . . .*

MEMBERS, NEW MEMBERS, PROSPECTIVE MEMBERS!

Please join us at the Opening Reception of *The Ladies* of ND/SMC to be held on Monday, September 14, 2015, in the Club Naimoli Room of the Purcell Pavilion. This is an important meeting for you to attend because you will meet other members of *The Ladies* and you will learn about opportunities and events on our schedule for this coming academic year. Program Co-Chairs, Val Bartels and Jackie Welsh have an impressive offering of activities for our members.

Our invited speakers for the evening will be President Carol Mooney from Saint Mary's College and Fr. Bill Lies, CSC, from the University of Notre Dame. Both speakers will inform us about what is new on their campuses.

We will have presentations from our Interest Groups on display and group leaders will be available to answer all your questions. Interest Groups include a Children's Playgroup, Creative

Cooking, Tennis, Evening and Morning Literature Groups, Knitting, and more. Our Membership Chair will be on hand to help you fill out a membership form. Dues for the year are \$25.

Mark your calendars for this date! You will not wish to miss this informative and inspirational meeting.

• **Who:** You and any woman associated with Notre Dame or SMC. Come with a friend. Bring a friend!

• **What:** Opening Reception for The Ladies of Notre Dame and Saint Mary's College

• **When:** Monday, September 14, 2015, at 7:00 PM till around 9:00 PM

• **Where:** The Club Naimoli Room, located in Purcell Athletic Pavilion. Ample parking in front of the southside entrance of the Pavilion at the Joyce Center is available.

• **Questions:** Please contact *Nancy McAdams, nocmc@comcast.net or 574-273-2555*



## *From the COMMUNITY SERVICES OPPORTUNITIES: CO-CHAIRS . . .*

Co-Chairs Betsy McCorry and JoAnn MacKenzie are focusing on community service opportunities for our membership. To that end, these women would like to tie into those organizations with which our members are currently involved. Our purpose is two-fold: we can build on that foundation and we have members already engaged in service who can represent their organizations to the members at large and welcome personally those who choose to volunteer for the same cause. We ask that you send to us the names of the organizations with which you are affiliated, a brief description of its purpose, and what service opportunities exist for those who would be interested in joining. Please email by **October 1, 2015**, Betsy at [betsy.mccorry@gmail.com](mailto:betsy.mccorry@gmail.com) or JoAnn at [jam1910@comcast.net](mailto:jam1910@comcast.net) with the information re-

quested. Thank you in advance for your help.

The second initiative we are pursuing is to explore service opportunities with Saint Mary's College and the University of Notre Dame. Betsy is working with the University and JoAnn is working with Saint Mary's College. Since our organization has a strong affiliation with both institutions, we would like to identify opportunities that would involve our members more intimately with each. We welcome your input and suggestions in this area as well. We will keep you posted on what we learn. We look forward to working with you this year to promote the service component of our mission.

Betsy McCorry, <[betsy.mccorry@gmail.com](mailto:betsy.mccorry@gmail.com)> &  
JoAnn MacKenzie <[jam1910@comcast.net](mailto:jam1910@comcast.net)>  
*Community Services Opportunities, Co-chairs*

NOTE: See opportunities for Reading with  
Pre-School aged children on p. 15.

## *From the PROGRAM CO-CHAIRS . . .*

Program Co-chairs Val Bartels and Jackie Welsh have been spending part of their summer planning some fun events for the upcoming year. The Opening Reception on Monday, September 14, 2015 will be held in Purcell Pavilion's Club Naimoli. This is an opportunity to find out what "The Ladies" plan to do this year, talk to members about activities and pay your dues!

In mid-August, this is what is planned: on Friday, October 2, 2015, join a group to explore the beautiful grounds and the unique outdoor *Stations of the Cross* at the Edward Lowe foundation in nearby Cassopolis, MI. Wednesday, November 4, 2015, we will learn more about the *Dia de Los Muertos* at the Notre Dame Center for Arts and Culture located in downtown South Bend as well as have lunch at a local Mexican Restaurant. We will explore in November an art glass factory in Kokomo. In December we will celebrate with the newly recognized Life Members at a Christmas Tea. A trip to see the Christmas decorations in New Carlisle is also planned. Second semester you can look forward to a cooking demonstration at the Morris Inn, building your own mosaic bird-bath, painting silk scarves at St. Margaret's House, wine tasting with your spouse at the Morris Inn, exploring the treasures along the Red Arrow Highway near New Buffalo, the annual business meeting, the scholarship/newcomer welcome luncheon, the fashion show luncheon, perhaps a

## *From the NEWCOMER CO-CHAIRS . . .*

Newcomers to the Notre Dame and Saint Mary's College community are especially welcomed to *The Ladies*. Mary Fran Kitz and Kim Reynolds, Newcomer Co-Chairs, have scheduled three events for the first semester to provide an opportunity for newcomers to socialize on an informal basis.

Our first is a *Morning Coffee* on Wednesday, September 30, 2015, from 9:30-11:30 AM, at the home of Kimberly Reynolds. Please join us for coffee and interesting conversation!

We have scheduled an *Evening Wine and Desert* gathering on Tuesday, October 27, 2015, from 7-9:00 PM, at the home of our former past President, Denise Brenner. We welcome you to an evening for a glass of wine and relaxed conversation! Our third is lunch at *Mandarin House* on Edison Rd. in South Bend.

For directions to these homes/restaurant and to let us know to expect you, please call either of our co-chairs.

Mary Fran Kitz 630-750-8849 or  
Kim Reynolds, 574-383-5730

*continued from Program column on left.*

visit to Tulip Time in Holland, Michigan and, to end the year in May, the Memorial Mass. Watch upcoming newsletters and your email for specifics on each event.

Val Bartels, 271-3637 & Jackie Welsh, 277-1968

*"Off the Beaten Path", SOUTH BEND, IN*

## Día De Los Muertos



As Americans prepare for Halloween at the end of October, the people of Mexico, in particular the central and south regions, turn their attention to the traditions surrounding the Day of the Dead. A vibrant cultural synthesis, *Día De Los Muertos* combines the Catholic traditions of All Saints Day (November 1) and All Souls Day (November 2) with pre-Columbian concept of death that have been a part of Mexican society since Aztec times.

Join us on Monday, November 2, 2015, at 11:00 AM when we meet at the Notre Dame Center for Arts and Culture, 1045 West Washington Street, South Bend, for a private tour and presentation of two *Ofrenda* (altar) installations. A traditional *Ofrenda*, will be created for the lobby.

In *Crossroads Gallery*, visiting artists, Alma Levia (photographer) and Adriana Corral (installation artist) will create an exhibit honoring women who have died as a result of violence committed against them. (October is National Domestic Violence Awareness Month.)

Lunch follows at *Taquerio Chicago*, 2920 Western Avenue, South Bend. RSVP to Jackie Welsh, by November 1, 2015, and let her know if you are coming, and if you are joining her for lunch.

Chair: Jackie Welsh, 277-1968 or  
<jackie.welsh.14@gmail.com>

*"Off the Beaten Path", CASSOPOLIS, MI*

- EDWARD LOWE FOUNDATION
- BIG ROCK VALLEY
- THE STATIONS OF THE CROSS TOUR

What a treasure we have just 30 minutes north of South Bend, IN in Cassopolis, MI. Edward Lowe, the kitty litter king, created a foundation to champion the entrepreneurial spirit and located it in Big



Rock Valley. We will have a guided tour of the grounds, the facilities and the outdoor Stations of



the Cross. Val Bartels was there in July with her garden club, which lead her to arrange this for all of you. You will learn about Edward Lowe, then explore his beautiful home in an old barn, the hotel facilities inside boxcars, the conserved prairie grounds, and the wonderful metal sculptures that make up the twenty stations of the cross at the Memorial Gardens.

This *"Off the Beaten Path"* trip will occur on Friday, October 2, 2015. We will car-pool from two meeting places. Those who live near campus can meet in the parking lot of WNDU, on campus at the Holy Cross College traffic light off the **east** side of Rte. 933 between Douglas and Angela. Meet at 9:40 AM, then travel to the Kabelin Ace Hardware/ Martin's Supermarket parking lot on SR 23 and Adams Road in Granger, where the rest of us will meet by 9:55 AM. After the approximately 90 minute tour, we will enjoy a lunch at the *Farmhouse Bakery & Restaurant* in nearby Vandalia, MI. This is one of the original farm-to-table venues and is run by a Mennonite family. Please RSVP to Val by September 25, 2015. Please let Val know in which parking lot you will be parking and whether or not you wish to drive. She also needs a count for both the restaurant and the foundation tour.

Chair: Val Bartels 271-3637 or  
<valreads@comcast.net>





## From the INTEREST GROUP CHAIRS:

### EVENING LITERATURE

The Evening Literature Group meets the first Thursday of each month at members' homes. The starting time is 7:30 PM. This group has been meeting for many decades and a few of the members have been a part of it that entire time. In the beginning, the group only read the Great Books of the Western World. In recent years, this has changed and the selection has broadened. Classics, quality current fiction and the occasional non-fiction book, are now being read. Every summer in August, the current ND Shakespeare selection is read. Books are picked at meetings about three times a year. At the first meeting on Thursday, September 3, 2015, the selections for October through December will be made. These titles will be available at the Opening Reception, September 14, 2015. Second semester books will be determined in December. Please contact the co-chairs for more information about joining this group of reading women and their selection of books.

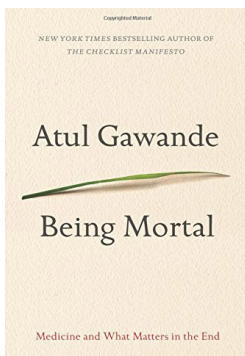
Val Bartels, 271-3637 <valreads@comcast.net>

Laura Fuderer, 277-0409 <fuderer@nd.edu>

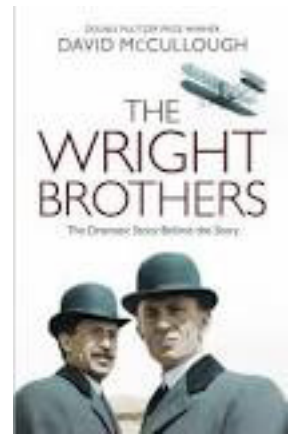
### MORNING LITERATURE

The Morning Literature group meets on the third Monday of the month from September through May. It chooses its books from among current fiction with occasional choices from non-fiction and biography. It meets in August for lunch to choose its selections for the first semester. Most of the time it meets in members' homes, starting at 9:30 AM. If it meets in the library, it starts at 10:00 AM. Sheila Marshall has ably run this group for many years and continues to do so this year. Contact her as chair for any information concerning this group as well as obtaining directions to members' homes.

The Monday, September 21, 2014, selection is *Being Mortal* by NY Times Best Selling author Atul Gawande. Joan Hofman will lead the discussion at her home. This work by a Boston physician tells what physicians might do for their patients at the end-of-life. The work supports hospice care. The goal for all is to have lived a good life.



Mary Lou Derwent will lead the discussion at her home of *The Wright Brothers* by David McCullough on Monday, October 19, 2015. This book is a well-research and documented history of two courageous brothers "who taught the world to fly!"



Kristen Hannah wrote the best-selling, highly popular and fascinating story of two sisters living in Central France during WWII. The story relates how their lives were affected by their relationships with their father yet changed by ideals and circumstances. It is a considered a "women's war story." Sue Uhran will lead the discussion of the text on Monday, November 16, 2015, at her home.



Sheila Marshall has book selections through January but is in need of selections for February through May. Please give her your ideas at any meeting or by email. If you are able to host and/or lead a discussion, please let her know. She is looking for another great year of reading and friendly fellowship.

Sheila Marshall, 291-2364

<shmarshall@att.net>

### OUTDOOR ADVENTURES

#### • WHAT: Hiking at Potato Creek State Park

Potato Creek is in north-central Indiana about 18 miles southwest of Notre Dame. The park features a wide array of activities and facilities for year-round enjoyment. A variety of natural habitats await, including the 327-acre Worster Lake, old fields, mature woodlands, restored prairies and diverse wetlands. Each offers unique opportunities for plant and wildlife observation.

We will hike 3-4 miles on flat trails and rolling hills. We will also visit the Nature Center and hopefully view a good array of birds and other wildlife.

• WHEN: Tuesday, September 22, 2015, at 9:30 AM.

*continued on next page.*



• **WHERE:** Meet at the Francis Branch Library to carpool to the park. The drive takes about 30 minutes. We will return around 2:00 PM.

• **WHAT TO BRING:** A small daypack with lunch, water, and camera, if you like. Wear sturdy walking shoes and

keep in mind that the path may be soggy in places, if it has rained recently.

• **RAINDATE:** TBD

• **R.S.V.P.** to: Nancy McAdams at 574-273-2555 or <nocmc@comcast.net> by: Sunday, September 20, 2015.

Chair: Nancy McAdams, 273-2555  
<nocmc@comcast.net>

## TENNIS

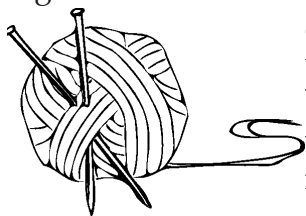
The Tennis group will meet to decide on times and days sometime in September. We welcome players of all abilities. Contact Elaine Nicgorski 574-234-5157 <nicgor@yahoo.com>, if interested.



## KNITTING

The LND/SMC knitting group meets on the second Monday of the month from 7:30-9:00 PM at Inge Deneen's home, close to the ND campus. RSVP to <ideneen@gmail.com> for directions and questions.

Our group is one year young and open to new and seasoned knitters (and crocheters). If you are interested, but don't know a knit from a purl stitch, fear not, we are happy to guide you along the way and teach you the ropes (and the yarns). We will be working on winter accessories and Inge has materials and detailed instructions for a shawl or a cowl for those who are interested, or may bring along any project on which you have been working.



Inge Deneen 232-0817,  
<ingeknits@gmail.com>

## CREATIVE COOKING

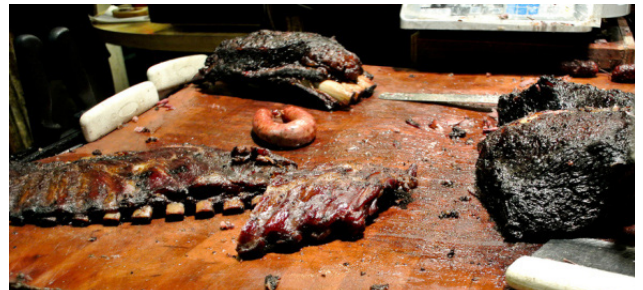
LND/SMC members and fellow cooking enthusiasts: It has been a long and hopefully relaxing summer, and here we are, ready to roll up our sleeves, fire up our grills and ovens and start

cooking away! The women in the *Creative Cooking* group love to cook, and as we do, we swap recipes, exchange life stories, dish out advice, learn from others, and just plain socialize. We believe that cooking and eating together is a great way to foster friendships. So if you are looking to try new (and tasty!) things and meet new friends, come and sign up with us at the Opening Reception on September 14, 2015. No previous cooking experience is necessary.

Last year we tackled the world of herbs and spices. This year, we explore American Regional Cooking, focusing on America's diverse culinary geography. We meet on the second Tuesday of every month at 7:00 PM in members homes. The dues for Creative Cooking are \$35 for LND/SMC members; this covers the yearly expenses except for the couples meeting, for which there is an extra fee. Here are the upcoming meetings:

- Saturday, September 12, 2015, 7:00 PM  
Grilling, SW Texas. (Couples; extra fee)

SW Texas ribs and brisket



- Tuesday, October 13, 2015, 7:00 PM.  
Midwest, German Beer
- Tuesday, November 10, 7:00 PM  
New England

The location for all of these is to be determined.

Please contact the chair with any questions:

Chair: Malgorzata (Gosia) Bak-Hill,  
574-273-1210 or <gobak99@yahoo.com>

## ROSARY

The Rosary Group meets monthly on the **first Friday** of every month at 10:00 AM. Moms with or without kids are very welcome. The first meeting is Friday, October 2, 2015. The group is meeting at a different place this year. They will gather at the Chapel of St. Catherine in the Fischer Graduate Residences Community Center: <<http://housing.nd.edu/graduate/fischer-grad/location/>>. For further information or directions contact ...

Chair: Mary Murphy  
404-304-4504 or <mmurphy08@gmail.com>



## CHILDREN'S PLAYGROUP FALL

Greetings to members of The Ladies of Notre Dame and Saint Mary College and a special "shout out" to all the young mommies out there! My name is Maria Guarraci and I am excited to be coordinating the 2015-2016 LND/SMC Children's Playgroup. The Playgroup is designed to provide opportunities that are social and fun for both moms and young children alike. There are three "subdivisions" within the playgroup; namely, *Lapsit*, *Beichner Center* and *Around Town*.

- *Lapsit*: A relaxed monthly gathering of mothers with non-walking children and their siblings. We are still looking for a volunteer to be the chairperson or co-chairperson of this group. Please let me know if you are interested.

- *Beichner Center*: A monthly gathering at the Beichner Community Center at University Village on Notre Dame's campus. This is a fun and comfortable space to gather with some toys, a snack, a craft, and the company of both veteran LND/SMC Children's Playgroup members as well as new members of the Notre Dame Community from all around the world including Hungary, China, Peru, Brazil, the United Kingdom, Korea, and French Canada, just to name a few. Our *Beichner Center* Playdates will be coordinated by Christina Chowrimootoo.

- *Around Town*: We love to check out different community locations with our little ones! We will schedule about two events per month at various locations around the Michiana area. Our *Around Town* Events will be coordinated by Esther Fafard and Maria Guarraci.

We encourage you to invite a guest to any of our events. Your guests need not be members of the Ladies of Notre Dame and Saint Mary College. If you are not already an LND/SMC member and on the LND/SMC Children's Playgroup email list and would like to be, please email me directly. If you know of somebody else who may be interested in becoming a part of the LND/SMC Children's Playgroup, please encourage her to email me for more information.

Finally, if you have any ideas for our playgroup: ways to improve our events, ideas for another subdivision of the playgroup, or ideas about locations to visit in the area, please do not hesitate to contact me.

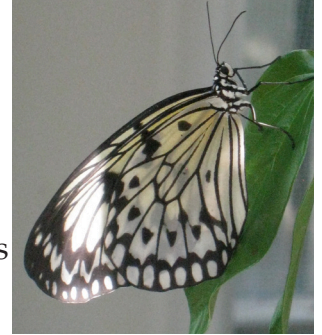
Thank you and I look forward to seeing you and your children at one of our upcoming events.

Chair: Maria Guarraci  
<mariguarraci@yahoo.com> or 605-951-6227

## CHILDREN'S PLAYGROUP CALENDAR

LNDSMC Playgroup Calendar of Upcoming Events for Fall 2015:

- Wednesday September 9 – 10 AM  
Fernwood Botanical Gardens and Nature Preserve in Niles MI
- Friday September 18 – 9:30– 11:30AM –  
Beichner Center Playdate –  
Butterfly Beginnings – on Notre Dame Campus
- Monday September 21 – 10AM  
Central Park in Mishawaka
- Wednesday September 30 – 11 AM  
Lapsit – Member's Home in Granger
- Thursday October 8 – 10 AM  
Potawotami Zoo in South Bend
- Friday October 16 – 9:30 – 11:30AM  
Beichner Center Playdate – Farms in the Fall – on Notre Dame Campus
- Wednesday October 21 – 10 AM  
Matthy's Farm Market in South Bend
- Friday October 30 – 11 AM – Lapsit  
Member's Home TBA
- Monday November 2 9:30 AM  
Notre Dame Fire Department Tour on Notre Dame Campus



Stay tuned for our future events in November and December including

- Lapsits, Beichner Center Playdates
- "Grandma for a Day" in November and "Holidays Around the World" in December),
- KidsFirst Museum, and
- Fun N Fitness Gymnastics

For locations, directions to locations, and possible entry charges, please contact the chair.

Chair: Maria Guarraci  
<mariguarraci@yahoo.com>  
or 605-951-6227



*From the Assistant TREASURER . . .*

The LND/SMC Remembrance Cards are a great way for members to give recognition to others at the time of a special occasion, such as birthday, anniversary, graduation or new position, as well as In Memoriam to the family of those who have passed. Those who have passed are remembered in the LND/SMC Memorial Mass each May.

Keep in mind that your gift associated with the Remembrance Cards is fully tax deductible. All monies raised through the use of these cards are donated by the giver to the LND/SMC Scholarship for Local Women at either Notre Dame or Saint Mary's College. If you would like to have one of these cards on hand, contact Mary Lou Derwent, [mllderwent@alumni.nd.edu](mailto:mllderwent@alumni.nd.edu) or Jacqueline Thomas, [jbthomas0429@gmail.com](mailto:jbthomas0429@gmail.com). A packet will be mailed to you, followed by another one via return mail when you use it.

*In Memoriam:*

- James L. Satorius  
(Walter and Elaine Nicgorski)
- Prof. Emerson Funk  
(Joni and Bob Williamson, Helen and Barth Pollak)
- Prof. Emil Hofman  
(Jerry and Marge Marley, Joni and Bob Williamson, John and Mary Lou Derwent)
- Mary Sparks, LM  
(Jerry and Marge Marley, Wm. Phillip and Carolyn Helmen, John and Mary Lou Derwent)
- Marian Karwowski  
(John and Mary Lou Derwent)

*Jacqueline Thomas*  
Assist. Treasurer  
[jbthomas0429@gmail.com](mailto:jbthomas0429@gmail.com)

*From the TREASURER . . .*

Special thanks is extended to those listed below who have made donations to the 2014-15 LND/SMC Scholarships for Local Women at both Notre Dame and Saint Mary's College since our last publication,

- Jackie Welsh, April 2015 to UND and SMC
- Erin McAdams, June 2015 to UND

*Bobbie Corke*  
2014-15 Treasurer  
[rjcorke@hotmail.com](mailto:rjcorke@hotmail.com)

IN MEMORIAM

**Simone Parnell**

March 15, 1917 - June 15, 2015



*"She was a women of many facets ...."*

Simone Florette Desroches was born in Batiscan, Quebec, Canada, on March 15, 1917. The young Simone, growing up with five older siblings, quickly developed a love of writing. First at Mount Ste. Marie Convent School in Montreal, then as secretary to a Parliament Minister in Ottawa, Simone perfected her talent and writing skill.

In 1946, Simone and Charles Parnell were married. As Charles earned his PhD at Yale University, Simone edited his thesis. A move to the University of Notre Dame followed. While Charles taught his classes at the University, Simone became active in The Ladies of Notre Dame/Saint Mary's College, the Christian Family Movement and as "Mom" to students in the Angers, France foreign studies program.

Shortly before Charles died in 2004, Simone moved to live with their daughter Madeleine in Bloomington, Illinois, where she resided until her peaceful death there.

Simone died on June 15, 2015. She was predeceased by her husband Charles and by children Joseph and Catherine. She will be greatly missed by daughters Marie, Madeleine and Anne-Michele, and their spouses, as well as by eight grandchildren and fifteen great-grand-children.

On June 19, 2015, funeral services for Simone were celebrated at the Basilica of the Sacred Heart, Notre Dame, Indiana. Burial followed at Cedar Grove Cemetery, Notre Dame, Indiana.

IN MEMORIAM

Mary Reidy Sparks

June 26, 1920 July 7, 2015



*"She was a women ahead of her time ...."*

Mary was born to Maurice and Mildred Reidy in Newton Highlands, Massachusetts, on June 26, 1920. She graduated from Emanuel College, MIT and Andrews University. She first worked as an aeronautical engineer at Republic Aviation in New York City during WWII. On August 21, 1948, she married David Sparks. One week later they sailed for France for a year abroad in Paris. David, a WWII vet, had completed two years at Swarthmore and was to study at the Sorbonne. Mary attended a program in French for non-degree seeking students and received a certificate of completion.

The year 1971 brought a move to South Bend where David took a position as Director of the University of Notre Dame Libraries and Mary began her long career as a mathematics and physics teacher in the South Bend Community School Corporation. In addition to teaching, she was a coach for several girl's sport teams.

Through out her career, Mary was a member of organizations as diverse as the American Association of Physics Teachers, Elbel Women's 18 Hole Golf League and Michiana Figure Skaters Association as well as being a *"Teacher in Space"* finalist. She was president of *The Ladies of Notre Dame & Saint Mary's College*, in 2000-2001. She was a long-time volunteer at Harbor Lights Hospice and both a sacristan and a communion minister to the sick at St. Joseph Parish, South Bend.

Mary's parents Maurice and Mildred, three brothers, Maurice, Roger and Parker, her spouse, David and a son, Michael, predeceased her.

Mary is survived by two younger sisters, Sarah and Judith, a daughter Elizabeth, sons David (Paula), George (Mary), John (Ginny) and Joseph as well as nine grandchildren and eight great-grandchildren.

Mary died on July 7, 2015, in Kendallville, Indiana, several weeks after her gala 95<sup>th</sup> birthday celebration. Her Mass of Christian Burial was celebrated on July 11, 2015, at St. Joseph Church, South Bend, IN. Burial followed at Riverview Cemetery, South Bend, IN.

IN MEMORIAM

Elizabeth Sweitzer Jerger

March 27, 1920 - June 12, 2015



*"She was an artist ...."*

Elizabeth C. "Bette" Jerger was born to James and Elizabeth Cordiner on March 27, 1920, in Fraserburgh, Scotland. In 1925 the family moved to Chicago, IL, where Bette met and, in 1941, married her Austin High School sweetheart, William Sweitzer. After the war, Bette and Bill moved to South Bend, raised their three children as Bette went to work at Notre Dame. Bill died in 1975.

In 1982, Bette married her boss, Notre Dame Dean of Engineering Edward Jerger. While spending many summers in London with the Notre Dame summer engineering abroad program, Bette discovered her love of watercolor painting. Her lovely creations have been featured in many art shows.

Bette died peacefully on June 12, 2015, just two months after the death of her beloved husband, Ed. She was also predeceased by her parents and her sister Tessa Stang.

Bette will be forever loved and missed by her three children, Jean, James and William and their spouses, plus eight grandchildren, nine great-grandchildren and two stepdaughters and their families.

Private graveside services were held at St. Joseph Valley Memorial Park in Granger, IN.

A memorial exhibit of Bette's paintings will be planned for a later date.

This is The Ladies website  
address:

[www.lndsmc.org](http://www.lndsmc.org)



# Thank You is Not Enough

It is hard to believe how quickly three years has flown by. I have cooked foods I have never dreamed of cooking. I have tasted foods I did not know I would like. I have made friendships that will last a lifetime.

*Thank you is not enough.*

At the end of May, the *Creative Cooking* group organized a beautiful going away gathering for me. Everyone was eager to find out where I would be going, and what I would be doing. At that time, I was unsure of where the next chapter of my life would take me, but now, I can announce that I will be staying in the area and have accepted a job at Valparaiso University working in their Residence Life Department. The job is similar to what I was doing at SMC. I will be overseeing an apartment building with upperclassmen. I am so excited to join their team and continue my growth and development as a professional. This also means I will be able to come to tailgate with you all, watch Sophie grow up, and continue the many friendships I have made.

I have been blessed to be part of this wonderful organization for the past three years.

*Thank you is not enough.*

We have laughed about the foods I made, the ones I did not care to eat, and my attempt to cook bread pudding in the crockpot. Many of you said: "It was delicious," BUT what you did not know was, that Donna Cox saved the day by adding some evaporated milk to keep it from being so

dry! I will forever cherish the memories that were made, the volume of the laughter, and how much my soul was filled with gratitude after each meeting.

*Thank you is not enough.*

Finally, I get to share with you the best part of this gathering. The ladies presented me with a beautiful image of San Pasqual. San Pasqual, for those of you who do not know, is the Saint of cooks and shepherds. For hundreds of years this image has been hanging in kitchens all across the world. During San Pasqual's life, he was assigned to duties in the kitchen and he would create magnificent meals using simple foods; much like we try to accomplish during our meetings. This im-

age will remind me of the wonderful meals I have shared with you all, and the meals I will prepare for others who I meet during the next chapter of my life

*Thank you is not enough.*

If that wasn't enough, the ladies gave me my first REAL knife with the word LND/SMC engraved on the blade. Each time I cook, I will be blessed by San Pasqual and remember

all the meals I have shared with the friends I have made through this organization. Again, The words *thank you are not enough* for everything I have experienced over the past three years. I am a better woman because I have met all of you.

God Bless,

Kelley McCarthy

<kelleymmccarthy@gmail.com>



Left to right: Kelley McCarthy, Mary Fran Kitz, Donna Cox and Jennifer Velasco at Carol Porter's home.

Ques: How do I receive an electronic version of the Newsletter?

Ans: When you send in your membership form and dues, check the box at the bottom of the page selecting E-Newsletter as your delivery choice. Note that the Membership Co-Chair Pam Chipman compiles the initial list for the E-Newsletter distribution.

### *From the TREASURER. . .*

A special "Thank You" to all who made individual donations to the LND/SMC Scholarship Fund or made donations through the use of Remembrance Cards during 2014-2015. Individual donations totaled \$2925, with the University of Notre Dame receiving \$1915 and Saint Mary's College receiving \$975.

Members using Remembrance Cards contributed \$1050.00 to the University of Notre Dame and \$250 to Saint Mary's College.

All individuals recognized *In Memoriam* through the use of Remembrance Cards during 2014-2015 were remembered at the Annual LND/SMC Memorial Mass celebrated May 7, 2015, by Fr. Thomas Blantz, CSC, in the Chapel of Regina Hall at Saint Mary's College.

There were no additional LND/SMC Fundraisers held this year; however, income from the Scholarship Luncheon, held February 28, 2015, generated \$300 in proceeds coming in under budget. Checks for \$150.00 were sent to both the University of Notre Dame and Saint Mary's College. An additional check for \$255.00 was sent to both the University of Notre Dame and Saint Mary's College from the Spring Luncheon. As per Board decision \$370 was sent to Saint Mary's from a savings account. Overall the total donations to Notre Dame was \$3370 and to Saint Mary's College was \$2000.

An internal audit of the 2014-2015 Treasurer's records was conducted by Mary Watts-Strieder and Catherine Kossler\*\* on July 21, 2015. All records were verified and found to be accurate as recorded. The books were then given to the 2015-2016 Treasurer, Catherine Kossler.

On August 27, 2015, the Executive Board Members approved the LND/SMC 2015-2016 Budget. Income from the annual membership dues and donations from Life Members is estimated to be \$4375. Estimated expenses are \$5286.00. If you would like to receive a copy of the approved budget, please contact Treasurer Catherine Kossler at <kosslerfam@gmail.com> or 614-596-0802.

\*\*NOTE: Catherine Kossler substituted for Rama Gamesan at the last minute.

### *FROM THE CORRESPONDING SECRETARY . . .*

Notes have been sent on behalf of LND/SMC to the following people:

#### SYMPATHY

- Family of Josephine Massynbaede Ford, on her death May 16, 2015
- Irene Funk, LM, on the death of her husband, Emeritus Prof. Emerson Funk on June 7, 2015.
- Irene Funk, LM, on the death of her sister, Clara Louise Henke, in early August.
- Family of Simone Parnell, LM, on her death, June 15, 2015.
- Ruth Schmitz, LM, on the death of her sister, Rose Mary Mazeka, July 1, 2015.
- Family of Mary Sparks, LM, on her death on July 7, 2015.
- Joan Hofman, LM, on the death of her husband, Emeritus Prof. Emil T. Hofman, July 11, 2015.
- Margaret Kenney, LM, on the death of her husband, Emeritus Prof. V. Paul Kenney, July 18, 2015.

#### GET WELL

- Heather Yang, LM
- Anita McColleston, LM

#### HAPPY BIRTHDAY

- Mary Sparks on the occasion of her 95th birthday, June 26, 2015

#### CONGRATULATIONS

- Marika & Thomas Gorfon Smith on the ordination to the priesthood of their son, Philip.

Please contact these individuals on your own and keep them in your thoughts. If you need contact information for those listed, please call the Corresponding Secretary. Please inform the secretary of any life events involving LND/SMC members.

Patricia Kaiser, 272-5459, <PMKRD@hotmail.com>  
Corresponding Secretary



**Ladies of Notre Dame & Saint Mary's College  
2015-2016 Membership Form**

**To become a member of LND/SMC:**

1. Please complete the following information.
2. Send this form along with a check for \$25 for your dues to:  
Pam Chipman, 1208 Leeper Ave., South Bend, IN 46617.
3. Dues deadline for inclusion in the member directory is **Saturday, October 10, 2015.**
4. You **must** be a member of LND/SMC to participate in Interest Groups.

Last Name \_\_\_\_\_ First Name \_\_\_\_\_

Street Address \_\_\_\_\_  
City, \_\_\_\_\_ State, \_\_\_\_\_ Zip Code \_\_\_\_\_

Home Telephone Number \_\_\_\_\_

E-mail Address \_\_\_\_\_

Are **you** an employee of Notre Dame or Saint Mary's? ☐ Yes ☐ No If yes,

Circle ND or SMC and indicate your department: \_\_\_\_\_

Title of your position: \_\_\_\_\_

Your Campus Address: \_\_\_\_\_

Do you want the newsletter sent to your home or campus address? ☐ Home ☐ Campus

Is your **spouse** an employee of Notre Dame or Saint Mary's? ☐ Yes ☐ No If yes,

Circle ND or SMC and indicate department: \_\_\_\_\_

Spouse's Name: \_\_\_\_\_

Title of your spouse's position: \_\_\_\_\_

Spouse's Campus Address: \_\_\_\_\_

Are you new to the Notre Dame/Saint Mary's community within the past year? ☐ Yes ☐ No

\$\_\_\_\_\_ To become a member, please pay annual dues of \$25.

**make your check payable to LND/SMC.**

\$\_\_\_\_\_ To make a Life Member Sustaining Donation

**make your check payable to LND/SMC**

\$\_\_\_\_\_ To make a donation to our Notre Dame Scholarship Fund,

**make your check payable to University of Notre Dame.\***

\$\_\_\_\_\_ To make a donation to our Saint Mary's College Scholarship Fund,

**make your check payable to Saint Mary's College.\***

*\*Please include separate check for each scholarship donation. Thank you.*

*N.B. Donors to the 2015-2016 Scholarship Funds will be acknowledged in the newsletter. If you choose not to have your donation publicly acknowledged, please check here. ☐*

I am interested in participating in or helping with the following Interest Groups:

- ☐ Children's Playgroup ☐ Creative Cooking ☐ Evening Literature ☐ Knitting  
☐ Morning Literature ☐ Newcomers & Visitors ☐ Outdoor Adventures ☐ Tennis

**Choose to receive your LND/SMC Kaleidoscope by one of the following:** (Please check one. If nothing is checked it will come 1st Class.) ☐ Campus Mail ☐ Electronic Mail ☐ Regular 1<sup>st</sup> Class Mail

This page has just advertisements so that the membership form may be removed and returned to the Membership Co-Chair Pam Chipman.

The Head of the Cushwa Center,  
Kathleen Cummings, has asked us to spread the  
news of a showing  
at  
The Notre Dame Center for Arts and Culture  
West Washington St., South Bend, IN  
of  
Artist Frederick Franck's Drawings  
from the Second Vatican Council  
**OUTSIDER AT THE VATICAN**

Reception and Gallery Talk  
September 9, 2015, 5:00 - 7:30 PM

Open: Tuesday - Friday 9:00 AM - 5:00 PM  
Sunday noon - 4:00 PM



NOTRE DAME  
CENTER FOR ARTS & CULTURE  
BENEFIT

*Tea Time for the Arts*  
  
*You're cordially invited*

October 1, 2015  
2:30 - 5:00 p.m.  
at The Morris Inn  
University of Notre Dame





## HELP WITH READING

• Read Baby Read is a family literacy program that provides fun story times and, at the same time, mentors mothers as they establish reading aloud routines with their children. Volunteers are needed for the Read Baby Read Program at Lafayette's School-Age Mother's Program from 2:45 to 3:45 PM on Wednesdays during September and October and again in February and March. Teenage mothers are eager for attention and guidance as well as affirmation as they develop their mothering skills. Volunteers will work one-on-one with these young mothers alongside the Read Baby Read story-time leader. St. Margaret's House Read Baby Read Program is seeking volunteers to read aloud with preschool aged children for an hour before lunch is served. (Volunteers could work singly or in pairs from 11a.m. to noon on weekdays.)

Please contact Toni Fein for more information at 574-232-9705 or email <tonifein@gmail.com>. Lafayette School is located at 245 N. Lombardy Drive, South Bend, IN, 46619. St. Margaret's House is located at 117 N. Lafayette Street, South Bend, IN 46601, behind the Cathedral of St. James.

## TRIP TO KOKOMO NOVEMBER 11, 2015.

Many do not know that in the latter part of the 19th century that central Indiana had many glass making factories ... in particular making pressed glass plates, pitchers, glasses, etc. for use in the home. One of the glass making factories, *Kokomo Opalescent Glass Co.*, while still manufacturing glass in the same manner for the past 100+ years, makes glass for a different purpose: art glass. Sheet art glass can be considered an art form in itself. In the early 20th century it made glass for Tiffany & Co. Today it makes glass for many purposes. See < <http://www.kog.com> >.

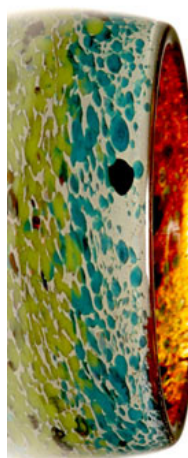
A reservation has been made for 12-15 people to attend a one hour private tour of the KOG factory starting at 10:00 AM on Wednesday, November 11, 2015. A decision has been made to car pool the 100 miles from South Bend to Kokomo leaving at 7:45 AM. See November newsletter for meeting place. There is a charge (\$5) for the tour, which will be refunded if you spend more than \$25 in the gift shop! In order to enter the factory each person has to sign a release form. See < [http://www.kog.com/Tour\\_Release.pdf](http://www.kog.com/Tour_Release.pdf) >. There will be

## LND/SMC ELECTED OFFICERS

PRESIDENT ..... Ravini Fernando  
PRESIDENT-ELECT .....  
PAST PRESIDENT ..... Nancy McAdams  
PROGRAM CO-CHAIR. .... Val Bartels  
..... Jackie Welsh  
RECORDING SECRETARY . .... Mary Malloy  
CORRESPONDING SECRETARY ..... Pat Kaiser  
TREASURER ..... Jackie Thomas  
ASSISTANT TREASURER ..... Catherine Kossler  
MEMBERSHIP CO-CHAIRS ..... Pam Chipman  
..... Kate Murphy

## APPOINTED BOARD AND OTHER POSITIONS

CHAPLAIN ..... Father Thomas Blantz, c.s.c.  
E-MAIL EVENT COORDINATOR ..... Julie Nelson  
E-NEWSLETTER CIRCULATION . Elaine Baumbach  
LIFE MEMBER CHAIR  
..... Winnie Caponigri-Farquhar  
LIFE MEMBER ADVISORS ..... Brigid Dutile  
..... Ruth Schmitz  
NEWCOMER & VISITOR CHAIR CO-CHAIRS  
..... Mary Fran Kitz  
..... Meg Mitzel  
NEWSLETTER CIRCULATION ..... Marge Marley  
NEWSLETTER EDITOR ..... Mary Lou Derwent  
PARLIAMENTARIAN ..... Elaine Nicgorski  
PLAYGROUP COORDINATOR ..... Maria Guarraci  
VOLUNTEER COORDINATOR CO-CHAIRS  
..... JoAnn MacKenzie  
..... Betsy McCorry  
WEBSITE MANAGER ..... Rumana Poellabauer



a form for one to sign provided the morning of the tour. We will lunch at a local restaurant *Pastariffic*.

Three or four drivers each taking 3 other people will be needed for this trip. It is expected that they share the cost of gasoline. If you are interested in going (and are willing to drive), contact the chair. RSVP by November 9, 2015 to chair.

Chair: Mary Lou Derwent, 277-1996  
<mldderwent@alumni.nd.edu>

The next deadline for the November newsletter is  
 PRIOR to October 26, 2015  
 <mldderwent@alumni.nd.edu>  
 Dated material. DO NOT forward

OPENING RECEPTION  
 MONDAY, SEPTEMBER 14, 2015  
 7:00 PM  
 CLUB NAIMOLI + PURCELL PAVILLION  
 CAROL A. MOONEY  
 PRESIDENT SAINT MARY'S COLLEGE  
 REV. WILLIAM LIES, CSC  
 VICE PRESIDENT FOR MISSION ENGAGEMENT AND CHURCH  
 AFFAIRS AT THE UNIVERSITY OF NOTRE DAME

Kaleidoscope  
 LND/SMC  
 P.O. Box 116  
 Notre Dame, IN 46556

Mary Sparks with four of her six children at her 95th birthday party on June 26, 2015. Her son John wrote that she was "very touched by the response of her friends on this occasion." She loved the cards. She went out with a party and joyous celebration that was her style.



To the left is a picture of a traditional Mexican *Ofrenda*. These altars are found in the home as well as in public places. The ones featured in our November 2, 2015 tour to the ND Arts & Culture Center will honor women whose deaths are a result of violence against them.