



KALEIDOSCOPE

THE LADIES OF NOTRE DAME AND SAINT MARY'S COLLEGE

VOLUME 49

NUMBER 4

APRIL 2015

From the PRESIDENT . . .

How does one begin to describe the life of a great man and great friend of LND/SMC such as Fr. Ted Hesburgh, csc, who passed away this month? He was a leader in international and national events and he put Notre Dame on the map. Yet, another sign of Fr. Hesburgh's greatness was his impact on a smaller scale on organizations such as ours. The Ladies of Notre Dame and Saint Mary's College was honored time and again by his generosity and affection. He included us graciously at numerous campus events and made us a part of the Notre Dame family. Thank you, Fr. Hesburgh, your wisdom, courage, and love will continue to inspire and strengthen us in our faith.

The Ladies of Notre Dame and Saint Mary's College honored its two scholarship recipients, Meredith Mersits (SMC) and Helen Cramer (ND) at the annual Scholarship Luncheon in February at the Rice Commons of Saint Mary's College. The chairs of the celebration, Elaine Nicgorski and Mary Lou Derwent, organized a beautiful event with an inspirational speaker, Professor Frances

continued on p. 3

From the BOARD AD HOC COMMITTEE . . .

At the March board meeting, a majority of the board members voted to bring to our membership the question of a name change for our organization. We will address this issue at the April Business meeting on Thursday, April 30 at 6:00 PM in the Board Room of Innovation Park.

The proposed name change is:

The Women's Association of Notre Dame
and Saint Mary's College.

We will set aside 15 minutes on the agenda for discussion. After the discussion, a spokesperson for each position: that is for keeping the name or for changing the name, will each speak for two minutes. After the speakers, we will have a paper ballot vote. Members will be asked to vote yes or no for a name change. The votes will be counted by three current board members. It takes a two-third vote majority of those present to change the name.

Meg Mitzel

BOARD AD HOC COMMITTEE

*The Ladies of Notre Dame
and Saint Mary's College.*

OR

*The Women's Association of Notre Dame
and Saint Mary's College.*

What's in a Name?

(Since April 2002, when I was asked by the President Marge Marley to assume the editorship of the Kaleidoscope, the newsletter for LND/SMC, I have published 56 editions. During that time I have not written an article over my name. All streaks come to an end, and with this edition, I do so.)

Meg Mitzel, as spokes-person for the Board Ad Hoc Committee (Pam Chipman, Nancy McAdams and Meg Mitzel), brought a motion to the Board, asking that at the Annual Meeting there be a vote for a proposed name change of this organization. The Board approved this by a majority vote.

A name is a powerful object as it designates

and distinguishes itself from others. It is its identity! When a name is changed, its history is lost. In this proposed name change, it is the MEMBERS of this organization, not the Board, not the Officers, not the committee members who make this decision. So, please think about it. Hence, I strongly suggest that you plan to attend this meeting at 6:00 PM on Thursday, April 30, 2015, at Innovation Park, to register your thoughts and your decision on this issue. You **must** be present to vote.

*Mary Lou Derwent,
editor of Kaleidoscope*

THE LADIES OF NOTRE DAME AND SAINT MARY'S COLLEGE
2014-2015 PROGRAM

April 9, 2015 Thursday 6:00 PM	<i>"Let's Eat Out," at Javier's Bistro, 2007 Miami St., South Bend, IN</i> See <www.javiersbistro.com> RSVP prior to April 8 to chair. See p. 4. Chair: Val Bartels, 271-3637, <valreads@comcast.net>
April 20, 2015 Monday 8:30 AM	<i>"Off the Beaten Path" Chicago to Art Institute of Chicago to see Ireland: Crossroads of Art & Design via South Shore RR.</i> RSVP to chair. See p. 4 Chair: Elaine Nicgorski, 234-5157, <nicgor@yahoo.com> Mary Lou Derwent, 277-1996 <mderwent@nd.edu>
April 28, 2015 Tuesday 10:00 AM	Visit to Vite's Greenhouse, 2610 Redbud Trail S., Niles, MI RSVP to chair by April 21, 2015. See p. 4 Chair: Nancy McAdams, 574-273-2555, <nocmc@comcast.net>
April, 30, 2015 Thursday 6-8:00 PM	Annual Meeting at Innovation Park Board Room See p. 1 and 3 Chair: Nancy McAdams, 574-273-2555, <nocmc@comcast.net>
May 3, 2015 Sunday TBD	Fashion Show and Tea, Morris Inn Ballroom See p. 14, 15 Chair: Renata Matousova, 574-271-0216, <Renata11@mac.com>
May, 7, 2015 Thursday 5:00 PM	Memorial Mass at Regina Hall Chapel, Saint Mary's College Celebrant: Fr. Thomas Blantz, csc, Chaplain See p. 16 Chairs: Marge Marley, 298-9134 <mamarley57@gmail.com>, Addie Cashore, 246-0496, <acashore@saintmarys.edu>

PROPOSED SLATE OF ELECTED OFFICERS

PRESIDENT Ravini Fernando
PRESIDENT-ELECT
PAST PRESIDENT Nancy McAdams
PROGRAM CO-CHAIR..... Val Bartels
..... Jackie Welsh
RECORDING SECRETARY Mary Malloy
CORRESPONDING SECRETARY Pat Kaiser
TREASURER Jackie Thomas
ASSISTANT TREASURER Catherine Kossler
MEMBERSHIP CO-CHAIRS Pam Chipman
..... Kate Murphy

APPOINTED BOARD AND OTHER POSITIONS

CHAPLAIN Father Thomas Blantz, c.s.c.
E-MAIL EVENT COORDINATOR Julie Nelson
E-NEWSLETTER CIRCULATION . . Elaine Baumbach
LIFE MEMBER CHAIR
 Winnie Caponigri-Farquhar
LIFE MEMBER ADVISORS Brigid Dutile
 Ruth Schmitz
NEWCOMER & VISITOR CHAIR CO-CHAIRS
 Mary Fran Kitz
 Meg Mitzel
NEWSLETTER CIRCULATION Marge Marley
NEWSLETTER EDITOR Mary Lou Derwent
PARLIAMENTARIAN Elaine Nicgorski
PLAYGROUP COORDINATOR Maria Guarraci
VOLUNTEER COORDINATOR CO-CHAIRS
 JoAnn MacKenzie
 Betsy McCorry
WEBSITE MANAGER Rumana Poellabauer

Kominkiewicz (Chair of Sociology, SMC), a delicious lunch, and lovely decorations. Professor Kominkiewicz inspired us with her talk about the importance of mentoring in our lives.

We still have events to look forward to this spring! Don't miss the "*Let's Eat Out*" dinner at Javier's Bistro on April 9, 2015, at 6:00 PM. Javier's Bistro offers "a fusion of American cuisine with Caribbean flavors" which sounds delightful. Please contact Val Bartels <val-reads@comcast.net> if you are able to join us.

Also on our agenda is a trip to the *Art Institute of Chicago* to view Irish Decorative Arts and enjoy a day in the city. This event will be held on Monday, April 20, 2015. A trip to *Vite's Greenhouse* in Buchanan, MI, on Tuesday, April 28, 2015, will be sure to get you in the mood for planning this season's gardens. Please check this newsletter for further details. Please attend the *Annual Business Meeting*, which will take place on Thursday, April 30, 2015, at 6:00 pm in the Board Room of Innovation Park at Notre Dame. Attendance at this meeting is an important way to stay involved with our organization. Refreshments will be served and parking is adjacent to the building on the south side. Entrance to the parking lot is off South Bend Ave. or Angela Blvd. Our meeting will be in the Board Room.

Finally, the *Spring Tea and Fashion Show* will be held on May 3, 2015, at 3:00 PM in the beautiful Morris Inn Ballroom. High Tea will be served with delicious sweets and savories and, of course, your choice of tea. *Flourish Boutique* will present fashions. Bring your friends – this is a wonderful way to celebrate spring.

I wish you a renewal of spirit, the hope of new beginnings, and much joy this Easter season. I would like to share with you an Irish Easter Blessing:

At the breaking of the Easter dawn
may the Risen Savior bless your home,
with grace and peace from above,
with joy and laughter, and with love.
And when night is nigh, and day is done
may He keep you safe from all harm.

Nancy McAdams,
President

From the RECORDING SECRETARY . . .

SUMMARY OF LND/SMC BOARD MEETING
MARCH 26, 2015

President Nancy McAdams, with the approval of all present, commenced the Board meeting well before 7:00 PM in order to allow Board members time enough to get home to enjoy the Irish men's basketball win over Wichita State! Nancy began the meeting with enthusiastic thanks to Mary Lou Derwent and Elaine Nicgorski for their successful work on the Scholarship Luncheon at Saint Mary's College in February. She also reported that Brigitte Mulvehill will be spending the 2015-16 academic year in London with her husband and family. The new website manager will be the capable Rumana Poellabauer. Brigitte has posted LND/SMC's governing documents (*Constitution & Bylaws*) on the website under *Resources*.

With spring finally here, the program committee has many options for members to get out and enjoy the warmer weather. Check throughout the Newsletter for specifics on all of the program activities. The Tea and Fashion Show is in need of models (*Flourish* is providing the fashions). Contact the chair Renata Matousova, 574-271-0216, <Renata11@mac.com> if interested.

Heidi Lamm will be collecting children's books at the Tea to be donated to children living at *The Center for the Homeless*. Please contact Heidi to offer to donate and for suggestions of age appropriate selections. (See p. 12) The Annual Business Meeting, open to all members, will be held April 30, 2015, at Innovation Park. Be sure to note the earlier start time: 6:00 PM. Voting will be on the agenda for a name change for our organization from *The Ladies of Notre Dame and Saint Mary's College* to *The Women's Association of ND and St. Mary's College*. This is clearly an important issue; a two thirds vote of members attending the meeting is needed to pass the change.

Finally, all members are encouraged to attend the Memorial Mass on May 7, 2015, at 5:00 PM in the Chapel of Regina Hall at Saint Mary's College. (See p. 16 for details.)

Mary Malloy, 277-4601
Recording Secretary

"Off the Beaten Path" Buchanan, MI

Nancy McAdams invites all to join her on the annual trip to *Vites Greenhouse* located at 2610 Redbud Trail S., Niles, MI, for interested members and guests on Tuesday, April 28, 2015. The group will tour the greenhouses, have a discussion with Jerome Vite about "What's New?" for our garden bed and landscaping this season Those who wish, may join Nancy and others at a "yet-to-be-determined" local place for lunch. Please contact Nancy at 574-273-2555, or < nocmc@comcast.net > Tuesday, April 21, 2015, as she needs a headcount for the speaker. She would also like to know, if you will be joining her for lunch.

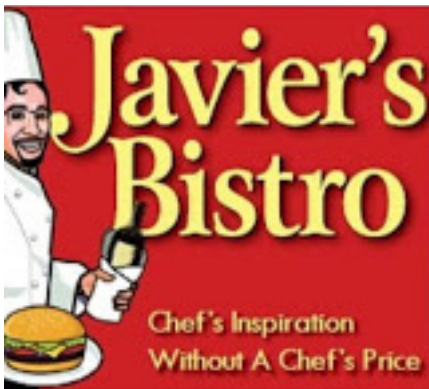
Women can car pool, if they wish, or go on their own. The greenhouse is about 20 minutes from South Bend. If you are buying plants, make sure you have adequate space to put them in your car.

If you are carpooling, let Nancy know and meet her in the parking lot of the Francis Library by 10:30 AM. If you are driving from Ironwood Rd. or Rte 933, take Bertrand Rd. west to Redbud Trail. Then drive north about three-quarters of a mile. The greenhouse is on the west side of the road. The drive along Bertrand Road in the spring is worth the trip.



Nancy, McAdams, 273-2555,
< nocmc@comcast.net >

"Let's Eat Out" . . .



Javier's Bistro, located at 2007 Miami St., South Bend, IN, is the site for the Thursday, April 9, 2015 , 6:00 PM outing. This restaurant features a fusion of American cuisine with spicy Carribean flavors. See <www.javiersbistro.com> for menu ideas and map. Both of these outings require that you make a reservation with the chair prior to the day scheduled. RSVP by April 8, 2015 to Val Bartels with any

Chair: Val Bartels, 271-3637,
<valreads@comcast.net>

"Off the Beaten Path" Chicago, IL

On St. Patrick's Day, the *Art Institute of Chicago* opened a show in Regenstein Hall titled *Ireland: Crossroads of Art and Design 1690-1840*. This show celebrates the Irish as artists, collectors and patrons. It features furniture, paintings and artifacts.



On Monday, April 20, 2015, Elaine Nicgorski and Mary Lou Derwent will be going to this exhibition as well as visiting the AIC's renovated galleries of ancient art. . . Greek, Egyptian and Roman. They will be traveling via the South Shore RR leaving the Airport station at 8:48 AM (EDT) and plan to return on the 5:10 PM (CDT) train or perhaps the EXPRESS leaving at 3:47 PM (CDT) They will stop for lunch and perhaps to do some shopping.

If you wish to join them, call one of them and let her know that you are coming. They will be on the lookout for you at the station. Arrive by 8:30 AM at the station so you can park and purchase your ticket before boarding. The cost for entrance to the Museum is \$20 for adults and \$17 for seniors.

Elaine Nicgorski, 234-5157, <nicgor@yahoo.com>
Mary Lou Derwent, 277-1996, <mderwent@nd.edu>

From the INTEREST GROUP CHAIRS . . .

CREATIVE COOKING

The Creative Cooking club has been cooking up a storm these past few months!

In January, Ashley, Angela and Kelley opened up their home. On a cold and snowy night, the group came to Saint Mary's Holy Cross Hall for a unique dinner with flavors of CARDAMON AND TURMERIC.

In February, one of our newest members, Catherine Kossler, opened up her home (she just moved in 6 weeks prior!!) to the group and they enjoyed a nice dinner with flavors of TARRAGON AND SALT.

On St. Patrick's day many came together to enjoy many different foods and desserts

with the flavors of CORIANDER AND MINT. Some are shown below: berries and desserts on left, tri-colored carrots and a main course on right.



Ashley and Kelley cannot believe that the year of creative cooking is coming to an end and that they only have two more events remaining.

Please join them for the next meeting held at Jennifer Velaso's home.

Saturday, April 18, 2015 at 11:00 AM

Brunch Theme

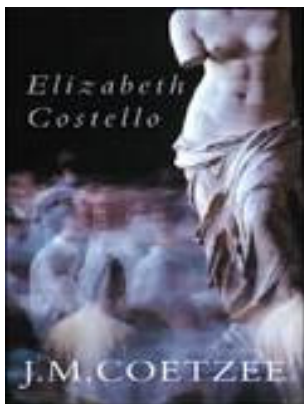
GINGER & MUSTARD

Finally the planning meeting will take place on Tuesday, May 12, 2015, at 7:00 PM - Place TBA Ashley and Kelley would like to take a moment to say: "Thank you!" for letting them lead this group for the past two years. They have had so much fun getting to know you all, eating some delicious foods and having amazing fruitful conversations.

Ashley Hall, 256-612-9843, <ahall1@saintmarys.edu>;
Kelley McCarthy, 954-383-8143 <KMCarthy@saintmarys.edu>

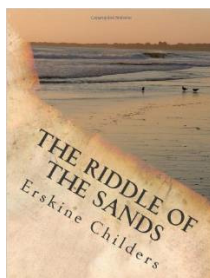
EVENING LITERATURE GROUP

The Evening Literature Group meets on the first Thursday of the month during the academic year and has a different schedule during the summer months. Nobel Laureate J.M.Coetzee's *Elizabeth Costello* is the group's choice for Thursday, April 2, 2015. It is a compilation of eight Lessons (chapters) and a postscript. Two of these lessons, which are fictional narratives, were given in the



1990's as lectures by the author. Reviews put this book as, "not only different, but challenging." The group will meet at the home of Christine Costello. Josephine Ford will be leading the discussion.

Silvia Rojas-Anandon will be hosting the Thursday, May 7, 2015, meeting



where Marina Smyth will lead the discussion of *The Riddle of the Sands* by Erskine Childers.

It is a 1903 spy-thriller classic!

Co-Chairs: Val Bartels, 271-3637

<valreads@comcast.net>

Laura Fuderer, 277-0409

<fuderer@nd.edu>

Rosary

Members of the Rosary Group will **NOT** meet on Friday, April 3, 2015. It is Good Friday. The last meeting of this semester will be on Friday, May 1, 2015, at the home of Mary Murphy to say the Rosary together at 11:30 AM. The group will "take a hiatus during the summer months" and begin again on October 2, 2015. Moms with or without children are welcome. We pray for the intentions and needs of our membership. Contact Mary with questions or for further information.

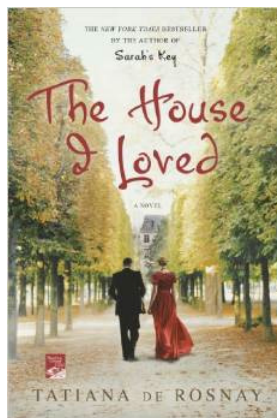
Mary Murphy, 404-304-4504,

<mmurphy08@gmail.com>

MORNING LITERATURE

The Morning Literature group regularly meets on the third Monday of the month at 9:30 AM.

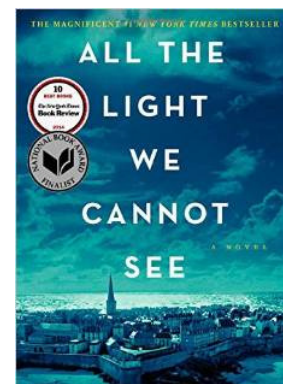
Hence on Monday, April 20, 2015, they will meet



at the home of Sheila Marshall to discuss *The House I Love* by Tatiana DeRosnay. It is about "one woman's resistance during an époque that shook Paris to its very core." By order of the Emperor, Baron Haussmann had planned and started large-scale renovations that would permanently alter the face of old Paris, mold-

ing it into a "modern city."

Barb Roche will be hosting the May 18, 2015, meeting at her farm in Berrien Springs, MI. Mary Ripple will be discussing Anthony Doerr's *All the Light We Cannot See*. The chair will email directions to both homes prior to each meeting. All members are welcome.



Chair: Sheila Marshall, 291-2364

<shmarshall@att.net>

TENNIS

We are still in need of at least ONE more Tennis players. If you ever wanted to return to playing tennis or to start playing tennis, NOW is the time.

Chair: Elaine Nicgorski, 234-5157
<nicgor@yahoo.com>



KNITTING

A knitting group meets the first Monday of the month from 7:30 - 9:00 PM at 309 Peashway, South Bend. The chair, Inge Deneen, proposes

that members of the group may start knitting the three-sided "merlot-colored" scarf that she is showing



Contact chair with questions. If you ever wished to learn how to knit, this is the perfect group with which to start.

Chair: Inge Deneen
232-0817, <ingeknits@gmail.com>

BEICHNER CENTER PLAY- GROUP DATES

The following are all
FRIDAYS 9:30 - 11:30 AM

- April 17, 2015
- May 15, 2015

Please join us for a relaxing time with friends, snacks, crafts and toys!

See <<https://www.bigtent.com/groups/Indsmcplay>> for further information regarding upcoming lapsit and around-the-town playgroups as well as cancellations, substitutions or rescheduling.

THIS BEICHNER CENTER
PLAYGROUP
REPRESENTS THE
WHOLE WORLD!

WE
ARE
FROM

- CHINA
- ENGLAND
- FRENCH-CANADA
- HUNGARY
- &
- USA!



"Off the Beaten Path" South Bend

On February 12, 2015, Jackie Welsh chaired a visit to *FireArts,inc.* located in downtown South Bend. Ten years ago, a group of 3-D artists choose a vacant city-owned building on Colfax Ave. near the St. Joseph River, raised funds, and started renovating the space in order to create a workspace for themselves. Our guide, Jan Langland, remarked that at the time of its beginning the place was in chaos!... cold or hot, dusty, drafty, poorly lit, poorly ventilated. It needed a total cleaning to remove debris as well as repair of gas lines and plumbing. Today, it may be dusty and littered in places but the ventilation, lighting and temperature have all been controlled. Some walls were removed and some others rebuilt.

After starting in the sales room Janice



Langland showed us areas or rooms where pottery, glass blowing, bead making, mosaics, carvings in both stone and wood, and jewelry are made as well as a small room where bronze casting of models are poured.

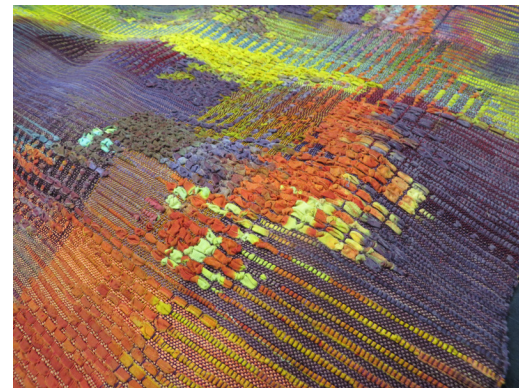
Overall the place is more than just individual workshops as the artists, working together in the same place, are catalysts for each others' creativity.



The tour ended in the space of one of the resident artists: Elfa Jonsdottir, a member of LND/SMC. Her art is 2-D but she, like the 3-D artists, has her own walls for hanging, a huge table to work on and adequate space to create her gorgeous and unique fabric art.

Her background: "Elfa originally studied textile in Iceland and later obtained a masters degree from the Rhode Island School of Design. For several years she was a visiting artist in the Art School at the University of Michigan, working extensively in textile, including surface design and weaving. She studied ceramics in Massachusetts at the Worcester Center for Crafts." (from: www.fireartsinc.com/artists/ejonsdottir.html).

The weavings that Elfa showed us were bursting with color and texture. She has devised a method



of "cutting" into fabric that looks like ancient manuscript writing and is strikingly original. (See p. 16) Her current project is batik:

both an art and a craft, which is a method to create and/or "paint" using wax and dye. Her working wall was covered with many of the squares that she has made in black on white canvas. When finished it will be stellar. It is already fabulous!

Many women finished up their morning by going to eat lunch together in the *Café Max* of the *Purple Porch Co-op*, a grocery store selling locally grown organic foods, at 123 N. Hill St, South Bend.



Scholarship Luncheon . . . February 28, 2015



Edwine Jean-Pierre & Cathy Mathews

With near floor to ceiling windows on three sides, the room was flush with sunshine and the decor hinted at spring.



Newcomer from Umea, Sweden... Research assistant in the Kroc Center ... Malin Akebo



Mary Malloy, Alice Henry & Margaret Kenney

All 45 women who made a reservation, came and the conversation was lively. The Ladies Scholarship recipi-

ents, Helen Cramer ND'15 and Meredith Mersits SMC'15, were accompanied by their mothers. The invited speaker Prof. Frances Kominkiewicz, Chair of SMC Social Work Department, was introduced by President Nancy McAdams. Dr. K., as she is called by her students, engaged Meredith in her presentation. Together they talked about HERstory... how each of them grew in their studies.

Prof. Kominkiewicz was born in Chicago; however, she has lived in South Bend since she was six years old. She attended St. Jude Catholic K-8



Meredith Mersits, SMC '15, Prof. Frances Kominkiewicz and President Nancy McAdams.

School and Marian High School. She stated that her Catholic faith, education and family have influenced her work. She has both a Bachelor and Master in Social Work and a Master of Science in Administration. She worked as a social worker in the Mishawaka Public Schools and for Catholic Charities/Catholic Social Service in South Bend.

With her husband John, they are parents of a son and daughter. Dr. K. did not receive her doctorate until her forties. When she entered academia as a new Ph.D. recipient, she brought with her the maturity of living as a wife and mother along with vast experiences as a social worker in family and children situations throughout the community. She has published in the areas of child abuse, child sexual abuse and violence.

For the past two years Meredith has been her research assistant and has been mentored by Dr. K. They both spoke about their experiences in mentoring through their activities. Meredith's field placement as a social worker this year has been at *South Bend Career Academy*, where she has worked with special education students.

Meredith Mersits SMC '15

The following was written by Meredith. She attended Holy Cross Grade School and graduated from St. Joseph's High, SB.

This past summer, I interned at a nonprofit in Chicago called *Little Brothers*. This agency caters to elderly persons in the Chicago area who are lonely and isolated. I finished my final season of volleyball in the fall and this year I have been interning through my major, Social Work, at *Career Academy* in the Special Education Department. Through this placement, I have been able to work on my 1-on-1 discussion skills, as well as doing a life and social skills group with some students.

On campus, I have continued to work for two of my professors: Dr. Frances Kominkiewicz in the Department of Social Work and Gerontology as her research assistant and for Dr. Adrienne Lyles-Chockley in the Justice-Education Department as her student assistant.

This semester, Dr. K. and I are continuing research about counting homeless youth and what the best strategies are for doing this. We

hopefully plan to publish our work and present it in the fall.

For Dr. Adrienne Lyles-Chockley, as her student assistant, I have been able to facilitate discussions about social justice issues; help plan, attend, and participate in an all day symposium about *Domestic Violence*; and together continue to plan more for this semester.

This year I was also able to practice my skills as a focus group leader for *The Belles Against Violence Office*, learning how to better plan events and promote this group on campus. I was a peer mentor for first year students and a "big sister" for first year athletes, specifically. During my four years at SMC, I was a member of the volleyball team.

Through my field placement, I have found that I have a passion for children and students. In the fall, I spent a lot of time applying to grad school for Social Work and service programs. I have officially been accepted to The University of Michigan (which I will defer) because I also have been accepted into *Teach For America*, in which I am placed in Special Education in Milwaukee, WI.

Helen Cramer '15

The following was written by Helen. She graduated from high school at Trinity School at Greenlawn, SB.

Helen Cramer is a senior at the University of Notre Dame studying Graphic Design (working with Prof. Robert Sedlack) and English. She has worked as a designer for the Film, Television, and Theatre department for the past two years, and is part of the Student Government communications department creating and promoting campus-wide events.



Helen Cramer & President Nancy McAdams.

me." I have worked for Notre Dame's Film, Television, and Theatre department creating the 'face' of the theater productions for the season. I am also working for ND Student Government, which allows me to work with a team to create campus-wide initiatives, such as *Irish State of Mind*, which is Notre Dame's mental health awareness week.

Recently, I took a class on designing for social good, in which I was able to collaborate on creating a high school after-school program for high school girls in Johannesburg, South Africa. All of these projects allowed me to combine all of my loves into one final product, as I get to read, brainstorm, illustrate, and design for each. Design allows me to dabble in so many unique and interesting fields, and I look forward to beginning my career in it.

Next year, I am hoping to take part in a year-long design apprenticeship at a theater in Washington D.C., or else look towards joining a graphic design firm in Indianapolis.

Thank you, Jackie Welsh . . .

Those who attended the Luncheon on February 28, 2015, were fortunate to be able to purchase a reproduction of a pastel of the Grotto that was originally created by Jackie Welsh. The LND/SMC Scholarship Fund received 80% of the sale price on the pictures. Twenty percent went to the cost of printing and matting. At the end of the luncheon all of the prints had been sold. *Thank you, Jackie!*



- CORRECTION•
- In the January issue it was stated that
- Gilberto Cardenas had the largest collection of Latino Art.
- He has the largest
- PRIVATE collection of Latino Art

“Off the Beaten Path” Granger

Co-chairs Meg Mitzel and Mary Fran Kitz welcomed Newcomers and Members to an evening social on Tuesday, January 27, 2015, at the Granger home of Mary Lou Derwent for the purpose of socializing and seeing the various crèches (60+) that she has set up during Advent and keeps on display until the feast of the Presentation of the Lord on February 2.

Mary Lou explained that her first Holy Family was a Hummel Joseph, Mary and Child from her mother in December, 1961, although it was much later when she started her collection. She gravitates towards sets and scenes that are made by global artisans. In viewing her collection, the uniqueness of each set is apparent and is representative of its culture. A stone set from Peru shows a standing Joseph with his arm around Mary and the Baby. From Tonga (left), the



scene shows pigs instead of sheep, and wise men bearing real pearls, not gold, frankincense and myrrh.

A favorite of those in attendance was a set from Ireland (below), it depicts faces found on ancient gravestones in Kerry. One of her newer sets is from



Bridget Hubbard, Denise Brenner, Newcomer Angela Coaguila-Valdivia & Meg Mitzel

Rwanda (It is shown at left on the table). It is a hand-crafted dark wood canoe carrying the Holy Family on their flight into Egypt, Mary is holding the Babe. The evening was truly a trip around the world as seen through the representation of the Christ Child's nativity.

Nancy McAdams and Jackie Thomas (right) wish you good cheer. It was a pleasant evening.



From the TREASURER . . .

Listed below are the names of the individuals who have made individual donations to the LND/SMC Scholarship Fund since the November 2015 Newsletter:

Isabel Charles - ND

Elizabeth Doering - ND

Margaret Kenney - ND

Mary Montenaro - ND and SMC

Kathleen Neal - ND

The total dollar amounts for Individual Donations from 7/1/14 to 3/14/2015 are:

University of Notre Dame:	\$1315.00
Saint Mary's College:	<u>750.00</u>
TOTAL:	\$2065.00

THANK YOU • THANK YOU • THANK YOU

ANNUAL MEETING

The 2015-2016 LND/SMC Annual Business Meeting will take place on Thursday, April 30, 2015, starting at 6:00 PM, in the second floor meeting room at Innovation Park. For those who have not been in the relatively new building, located diagonally across Angela Blvd. from the Compton Ice Rink, you can enter the building's parking lot either from Angela Blvd. or from South Bend Ave. The entrance is from the parking lot on the south side of the building. The slate of officers to be elected or appointed is listed on page 2. Thank you, Past-President Denise Brenner, for the slate.

ROCKY RIVER

A group of nine people, including students and faculty, are seated around a long wooden table in a dining hall. They are all smiling and looking towards the camera. The table is set with plates, glasses, and napkins. The background shows a typical dining hall environment with windows and other tables.

Val Bartels, 271-3637,

Pam Chipman 288-0995

SPAMalot

Three ladies attended the Sunday, March 22, 2015, afternoon matinee performance of *SPAMalot*, presented by the South Bend Civic Theater. We had excellent center section seats, about four rows away from the stage. From there we could clearly see all the action. *SPAMalot* is Monty Python's very irreverent take on the King Arthur's Camelot story. South Bend's group of amateur actors always does a great job. The actors were well casted and interacted well with each other. Our biggest complaint (and our only complaint!) was that some of the words were very difficult to understand. Partly this was due to the fake British accents and partly due to the "too-loud" instrumental music. Perhaps the Civic Theater needs to run the words above the stage as they do at the Lyric or MetOpera?

Val Bartels, 271-3637,

Cheryl Mogavero
3545 Culpepper Drive
Erie, PA 16505
camogaver@gmail.com

Angela Coaguila Valdivia
549 University Park Court
Mishawaka, IN 46545

Mildred Ulicny
574-284-9401

● NOTE: at this printing there have been ●
● NO outings scheduled for the ***Outdoor*** ●
● ***Adventures*** Interest Group. Please regu- ●
● larly check emails and the LND/SMC ●
● webpage for possible future events this ●
● spring. ●

From the Assistant Treasurer . .

The use of **LND/SMC Remembrance Cards** are a way for members to give recognition to others at the time of a special occasion, such as a birthday, anniversary or new position as well as IN MEMORIAM to the family of those who have died. Each May, those who have died will be remembered in the LND/SMC Memorial Mass. The monies which are raised through the use of these cards are donated by the giver to the LND/SMC Scholarship for Local Women at either Notre Dame or at Saint Mary's College. If you would like one of these cards to have "on hand" contact Mary Lou Derwent, <mdewent@nd.edu> or Jacqueline Thomas <jbthomas0429@gmail.com>. A packet will be mailed to you, and another one by return mail when you use it.

IN MEMORIAM

- Elise Romano Brooks
(Jacqueline & Flint Thomas, Robert & Julie Nelson)
- Marcella Barr
(Marge & Jerry Marley, Robert & Julie Nelson)
- Prof. J. Kerry Thomas
(John & Mary Lou Derwent)

IN HONOR OF

- Prof. Frances Kominkiewicz

Jacqueline Thomas
<jbthomas0429@gmail.com>.

Volunteer Service Opportunity . . .

The Ladies of Notre Dame and Saint Mary's College along with other Notre Dame Clubs around the world, will honor the memory of Father Theodore Hesburgh with a service project of their choosing. The Ladies' service project for 2015 is to provide new books for each child at the *Center for the Homeless* in South Bend, IN. Presently there are 28 children at the Center ranging from new-born to 17 years of age.

As with our former Easter Basket service project, a member can sign up to sponsor a child and provide that child with age appropriate books. The dead-line for this project is May 3, 2015, the date of The Ladies Tea. You can bring your donation to this event.

New or gently used books can also be donated for the Center's Family Education Center.

If you have any questions or would like to take part in this service project, please contact Heidi Lamm at <hlamm@nd.edu>. In return Heidi will tell you the age and name of the child for whom you will provide new books.

Many members have wondered what happened to the *Easter Basket Project* that Heidi has chaired for many years. Two area churches have taken over this project. For Heidi, that was a hard project to give up because even though it was a lot of work, it was also a lot of fun. On the other hand, she is happy to Chair this project. These children do not have a lot to call their own. As a child, many of us, if not most of us, loved receiving our very own book instead of having to borrow and return. (*Heidi Lamm is a past President of LND/SMC and has been chairing this spring service project in Fr. Hesburgh's name for many years.*)

From the Corresponding Secretary . . .

Notes have been sent by the Corresponding Secretary on behalf of LND/SMC to the following individuals.

SYMPATHY

- Martha Dunn, on the death of her mother, Marcella Barr, on January 14, 2015.
- Ann Sexton, on the death of her mother-in-law, Opal Sexton, on January 17, 2015.
- Jackie Thomas, on the death of her mother, Elsie Romano Brooks, in January 2015.
- The J. Kerry Thomas Family, on the death of their father Emeritus Prof. J. Kerry Thomas, January 18, 2015.
- Jennifer Velasco, on the death of her father, John Dewan, on February 13, 2015.
- Deb Berhard, on the death of her father, Delbert Kell on March 13, 2015.

GET WELL TO

- Donna Cox,
- Marian Cerny

THINKING OF YOU

- Mildred Ulicny,

Pat Kaiser, 272-5459
<PMKRD@hotmail.com>



From left: Meg Mitzel, Mary Lou Derwent, Catherine Kossler, Mary Fran Kitz, Bridget Hubbard, Elizabeth Pillay at Elia's for

Newcomers and Visitors Group met in snowy February to enjoy the Mediterranean cuisine at *Elia's* in South Bend. We enjoyed the food, company and conversation.

Newcomers also visited during morning coffee at the home of Mary Fran Kitz on March 23, 2015. As we enjoyed treats and sipped coffee, Inge Deneen worked on her various knitting projects and inspired us all to take up knitting.



Inge Deneen is showing one of her handknit sweaters

We have so enjoyed meeting, visiting and getting to know the wonderfully interesting Newcomers and Visitors of this past year. We truly hope that your transition to our community has been enhanced by your connection to our group. Both of us found the LND/SMC to be very welcoming when we first arrived, and our connection deepened as we became members and joined interest groups. We encourage you to join again in the fall and get involved.

We look forward to seeing your smiling faces at future events!

Newcomer Co-Chairs: Meg Mitzel, 607-797-3065
mmitzel55@gmail.com

Mary Fran Kitz, 630-750-8849
mkitz62@aol.com

spiral staircase



Blue Heron



Elfa's batik



pasta von congli



Glass Portrait



From the Treasurer . . .

Thank you, once again, to all who made individual donations and/or donations through the use of Remembrance Cards. As of March 14, 2015, donations to the LND/SMC Scholarship Fund include:

TYPE OF DONATION	UND	SMC	TOTAL
Individual Donation	\$1,315.00	750.00	\$2,065.00
Remembrance Cards	600.00	175.00	775.00
Total	\$1,915.00	\$925.00	\$2,840.00

These donations are very much appreciated. We are grateful for the payment of membership dues as well as for the generous donations made by the Life Members to our operating budget. Most of our events have come-in at, or near, the budgeted amount. In many instances, members of the event committees have donated items or personal funds toward the event. If you would like to receive a copy of the entire budget, please contact the Treasurer.

Bobbie Corke, Treasurer

<rjcorke@hotmail.com> 277-7098

Afternoon High Tea

The Spring Tea and Fashion Show is upon us. Come out and celebrate the soon to come warm weather. Once again, we will be holding our tea at the *Morris Inn Ballroom*. This year's event will be on Sunday, May 3, 2015, from 3:00 till 5:00 PM. There will be finger sandwiches, scones and pastries with your choice of three classic teas. Invite your friends, mothers and daughters to join you.

Flourish Boutique and *Little Princess Treasures* will be presenting their fashions. Flourish Boutique has moved from the northeast corner of Gumwood RD/Cleveland Rd. to Centennial Plaza. It is a contemporary store with trendy and interesting fashion. Little Princess Treasures, a children's boutique, formerly located in New Buffalo, MI, is presently at 12435 St. Rd. #23 in Granger near the intersection with Bittersweet Rd.

It will be a relaxing and entertaining afternoon before the joys of summer scatter us to the four winds. We hope to see you there. Please use the registration form attached to this newsletter and kindly RSVP by April 24, 2015. Questions can be directed to the event's chair, Renata Matousova, <renata.m@mac.com> or 574-271-0216.

We will also be collecting donations for two worthy causes. Please consider donating to either *Hope Initiative* (next column) or *The Center for the Homeless*. (See *Volunteer Opportunity* p. 12)

Hope Initiative

The Hope Initiative is a volunteer charitable organization devoted to "bringing hope through education to Nepal's poorest." It works to uplift individuals by focusing on transformative education for youth and adults alike. Hope gives individuals the tools they need to create change in their own lives to escape poverty and dependency. It takes children out of the field and into the classroom. But Hope needs your help.

Kind donations from organizations such as the LND/SMC are greatly appreciated and needed. Possible gently used donations are infant and children's clothing, shoes and winter gear (not the very polar, heavy cold weather items). It doesn't go below freezing there, but there is no heating inside houses, so everyone spends their days in fleece and sweaters. Clean used clothes can be brought to the Tea.

Let's do the Membership numbers . . .

132 = Life members

94 = Members

19 = New Members

245 = Total

The Ladies of Notre Dame & Saint Mary's College

Celebrate women in the community by inviting friends, mothers, sisters & daughters to an

Afternoon High Tea

With savories and sweets & a fashion show from
Flourish and Little Princess Treasures featuring fashion for women and children respectively.

Sunday, May 3, 2015

Cost \$30 per person

3:00 - 5:00 P.M.
Morris Inn Ballroom

Collecting donations of books and gently used children's
items for Center for the Homeless and the Hope Initiative.

Valet parking available.

Cut Here

Registration Details

Reservation Deadline - April 24, 2015

Please tear this section off and return along with your payment to:

Renata Matousova

52255 Dorchester Ct | Granger, IN 46530

NAME _____

ADDRESS _____

PHONE/E-MAIL _____

PLEASE SEAT ME WITH _____

FOR RESERVATION QUESTIONS, PLEASE CONTACT:

Renata Matousova at

574-271-0216 or renata.m@mac.com

The Ladies of Notre Dame & Saint Mary's College
Memorial Mass for Deceased Members of
the Notre Dame and Saint Mary's Family
will be celebrated in the
Chapel of Regina Hall, Saint Mary's College,
on Wednesday, May 6, 2015 at 5:00 PM
Fr. Thomas Blantz, csc, celebrant

Those who have died in the past year will be remembered.

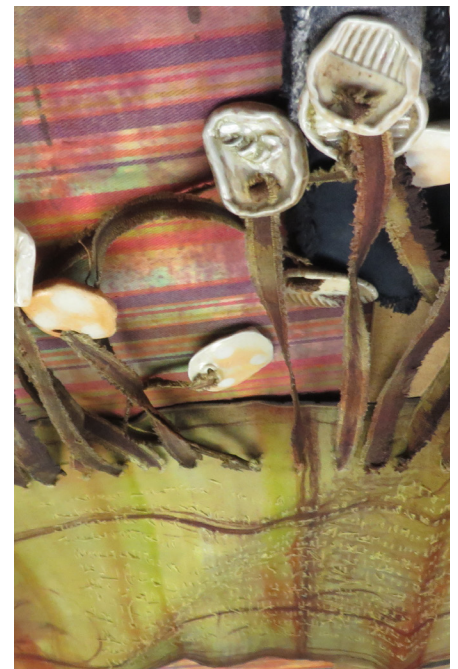
Please come and join us in honoring their lives.

Personal invitations have been sent to the families of deceased members of LND/SMC. However, this invitation is for ALL members and friends to join together in memory of them.

The Chapel of Regina Hall at Saint Mary's College is easily accessible and there is adequate free parking in the immediate vicinity of Regina Hall.

It is suggested that you access the parking map of Saint Mary's College at: <<https://www.saintmarys.edu/files/campus-map/campus-map-parking.pdf>>. You may park in the Regina Hall lot (north of Regina Hall) or the Faculty/Staff & Special Events (west of the Student Dining Hall/Student Center).

The next deadline is
PRIOR to September 4, 2015
<mdervent@nd.edu>
Dated material: DO NOT forward



Kaleidoscope LND/SMC
P.O. Box 116 Notre Dame, IN 46556